

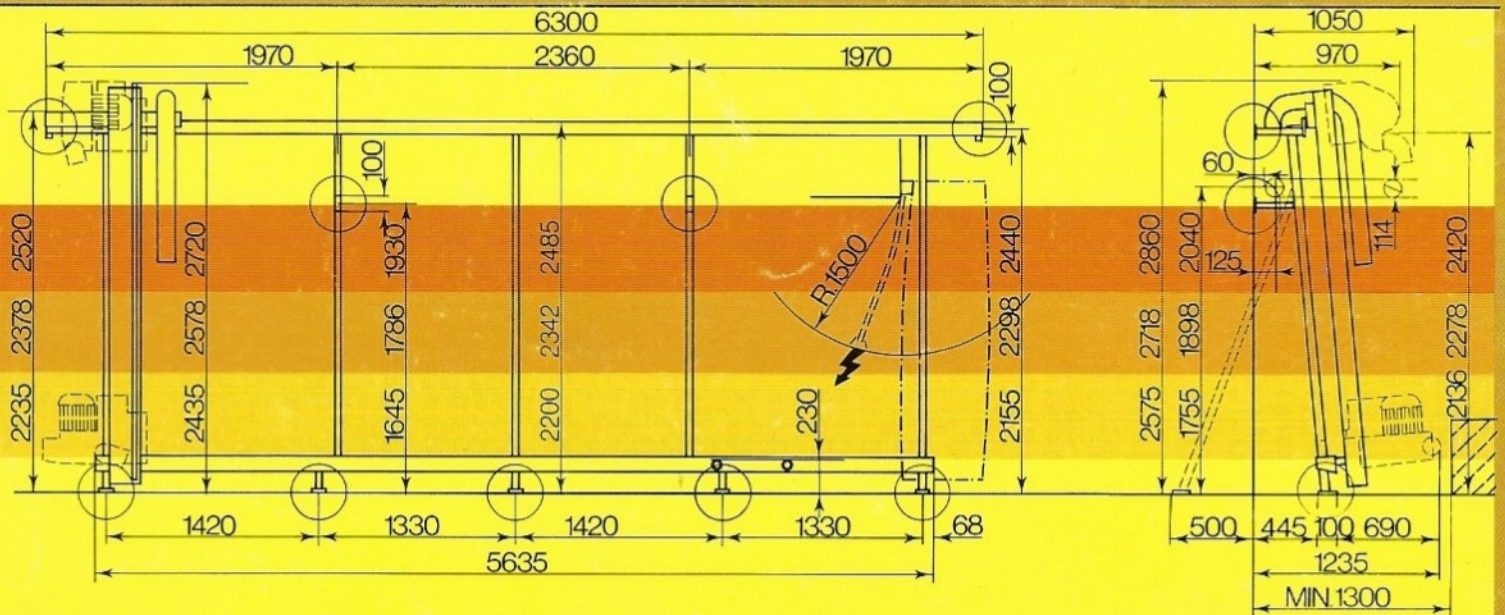
Dimensions/Technical Data/Special Models/Accessories

Normal length

Model 6220A

Model 6206A

Model 6192A



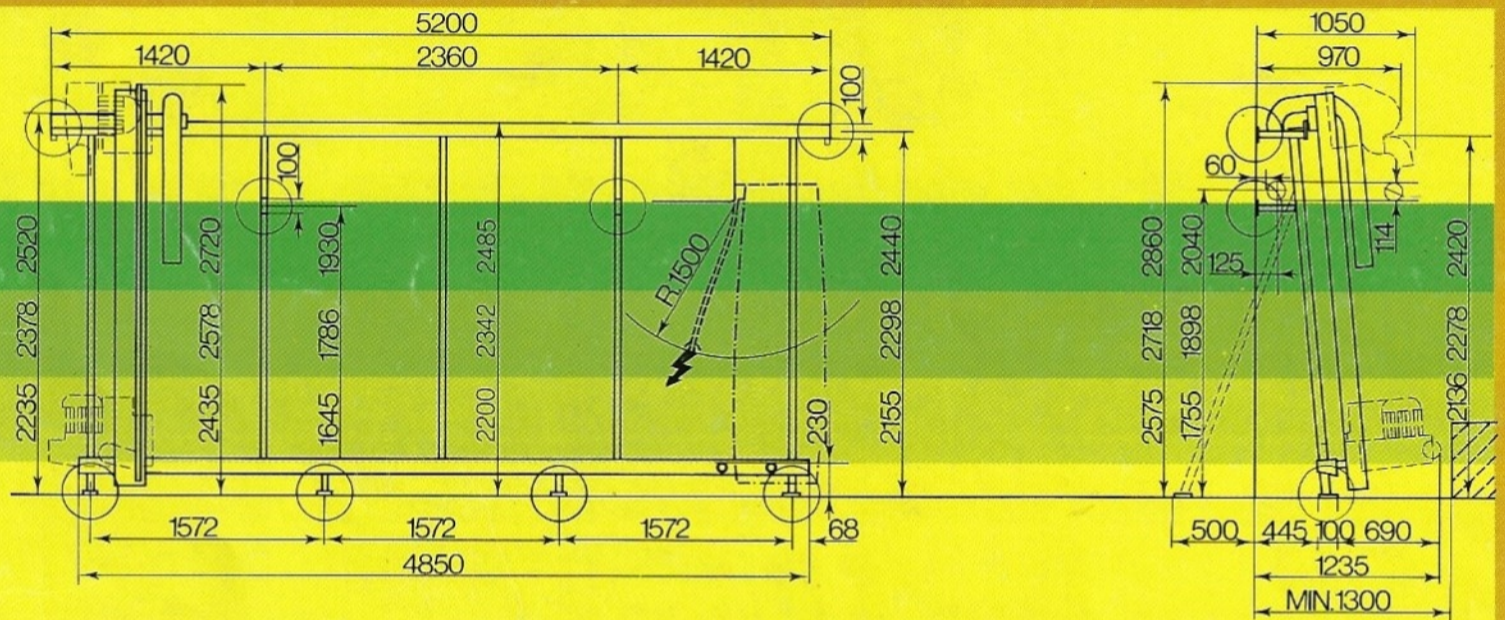
Model*	Machine Dimensions			Headroom	provides cutting range of			Min. Headroom	provides limited cutting range of		
	Length	Height	Depth		Length	Width	Height		Length	Width	Height
					Horizontal				Horizontal		
6220A	6300 mm 248"	2720 mm 107 ³ / ₃₂ "	1235 mm 48 ⁵ / ₈ "	2860 mm 112 ⁵ / ₈ "	5300 mm 208 ⁵ / ₈ "	2100 mm 82 ⁵ / ₈ "	2200 mm 86 ⁵ / ₈ "	2720 mm 107 ³ / ₃₂ "	5300 mm 208 ⁵ / ₈ "	1960 mm 77 ⁵ / ₃₂ "	2200 mm 86 ⁵ / ₈ "
6206A	6300 mm 248"	2578 mm 101 ¹ / ₂ "	1235 mm 48 ⁵ / ₈ "	2718 mm 107"	5300 mm 208 ⁵ / ₈ "	1957 mm 77"	2060 mm 81 ³ / ₃₂ "	2578 mm 101 ¹ / ₂ "	5300 mm 208 ⁵ / ₈ "	1817 mm 71 ¹⁷ / ₃₂ "	2060 mm 81 ³ / ₃₂ "
6192A	6300 mm 248"	2435 mm 95 ⁷ / ₈ "	1235 mm 48 ⁵ / ₈ "	2575 mm 101 ³ / ₈ "	5300 mm 208 ⁵ / ₈ "	1815 mm 71 ⁷ / ₁₆ "	1920 mm 75 ¹⁹ / ₃₂ "	2435 mm 95 ⁷ / ₈ "	5300 mm 208 ⁵ / ₈ "	1675 mm 65 ¹⁵ / ₁₆ "	1920 mm 75 ¹⁹ / ₃₂ "

Shortened

Model 5220A

Model 5206A

Model 5192A



Model*	Machine Dimensions			Headroom	provides cutting range of			Min. Headroom	provides limited cutting range of		
	Length	Height	Depth		Length	Width	Height		Length	Width	Height
					Horizontal				Horizontal		
5220A	5200 mm 204 ²³ / ₃₂ "	2720 mm 107 ³ / ₃₂ "	1235 mm 48 ⁵ / ₈ "	2860 mm 112 ⁵ / ₈ "	4200 mm 165 ³ / ₈ "	2100 mm 82 ⁵ / ₈ "	2200 mm 86 ⁵ / ₈ "	2720 mm 107 ³ / ₃₂ "	4200 mm 165 ³ / ₈ "	1960 mm 77 ⁵ / ₃₂ "	2200 mm 86 ⁵ / ₈ "
5206A	5200 mm 204 ²³ / ₃₂ "	2578 mm 101 ¹ / ₂ "	1235 mm 48 ⁵ / ₈ "	2718 mm 107"	4200 mm 165 ³ / ₈ "	1957 mm 77"	2060 mm 81 ³ / ₃₂ "	2578 mm 101 ¹ / ₂ "	4200 mm 165 ³ / ₈ "	1817 mm 71 ¹⁷ / ₃₂ "	2060 mm 81 ³ / ₃₂ "
5192A	5200 mm 204 ²³ / ₃₂ "	2435 mm 95 ⁷ / ₈ "	1235 mm 48 ⁵ / ₈ "	2575 mm 101 ³ / ₈ "	4200 mm 165 ³ / ₈ "	1815 mm 71 ⁷ / ₁₆ "	1920 mm 75 ¹⁹ / ₃₂ "	2435 mm 95 ⁷ / ₈ "	4200 mm 165 ³ / ₈ "	1675 mm 65 ¹⁵ / ₁₆ "	1920 mm 75 ¹⁹ / ₃₂ "

*** Model**
Mod. 6220A = machine length 6300 mm vert. cutting height max. 2200 mm
A = Standard (manual operation)

Technical data
- 3-Phase-Motor 5.5 kW (7.5 HP) 2880 rpm - protection IP 44/54
- Autom. star-delta contactor with built-in motor protection (start switch lockable)

Connecting cable
4 x 2,5 mm² (3 Ph/E) 19 mm ϕ
- Connection to l.h. or r.h. side of the machine (free end approx. 1500 mm)
- Dust bag or connection to central extractor installation to l.h. or r.h. side of the machine
- Tungsten-carbide sawblade 300 mm ϕ bore 30 mm ϕ - 4750 rpm - Cutting depth max. 80 mm

Assembling
wall-mounted or freestanding

Standard equipment
- 5.5 kW (7.5 HP) motor
- Star-delta contactor
- Complete built-in dust extractor system
- Plunge-cutting device for saw unit
- 1 Tungsten-carbide sawblade

Special designs
- Horizontally separated (for too small entrances or to facilitate transportation)
- 2-speed motor
- tropicalized execution
- special cutting dimensions on request

Standard models
- 3 different machine heights: 2720, 2578 or 2435 mm - 2 different machine lengths: 6300 or 5200 mm

Special Accessories
- Depth setting device for grooving tools
- Supports for freestanding installation
- Grooving system for ALUCOBOND
- Grooving tools
- DIGITRON unique digital length measuring system (resolution = ± 0.1 mm)
- SUPERSILENT noise-damping

Manufacturers

striebig ag

Grossmatte 26a
CH-6014 Littau/Lucerne/Switzerland
Telephone 041/57 02 57, Telex 868559

Consulting and Sales:

Mr Cross - Sales Gross Britannia
Herr Gutensperger - Sales Ngr