



# TORIT DUST COLLECTORS

CYCLONE MODEL 24

## High Efficiency Centrifugal Separators

Ratings at right cover FM Models — a clean after-filter assembly offers no measurable resistance to airflow. However, resistance will increase during operation — due to dust-loading of filtering media — but can be kept at a minimum by cleaning filter media on a regular maintenance schedule.

## PERFORMANCE TESTED

Performance ratings and A-scale sound level readings are available on all TORIT collectors. Ratings are read and verified under standard test conditions in TORIT'S Laboratories.

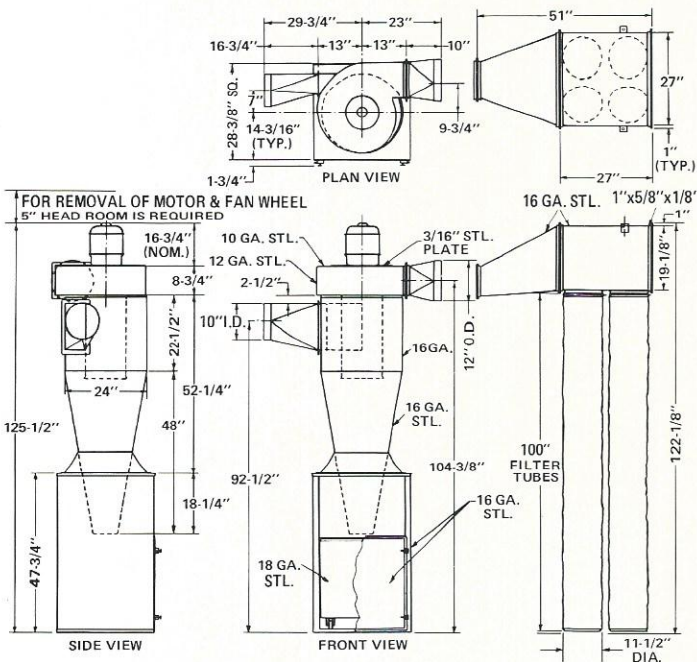
## MULTIPLE RATING TABLES

MODEL 24	CFM	VELOCITY (F.P.M.)	EXTERNAL STATIC PRESSURE (Inches W.G.)
10" Inlet	3500	6450	4.40"
12" Outlet	3000	5460	7.40"
	2460	4510	10.25"
	1950	3580	13.45"

## SPECIFICATIONS

	MODEL 24 FM	MODEL 24 FB
Dust storage capacity	8.5 cu. ft.	8.5 cu. ft.
Motor	7.5 horsepower, 3600 rpm, 230-460v/60/3 phase vertical motor (specify voltage when ordering).	
Inlet Diameter	10 inches	10 inches
Outlet Diameter	12 inches	12 inches
Shipping weight	750 lbs.	825 lbs.

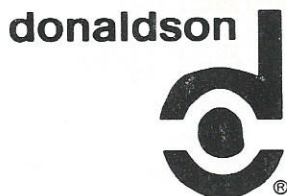
Specifications subject to change without notice.



55-gallon drum stand will increase overall height by 18 3/4 inches and floor space will be 37 x 37 inches on FM-55 unit.

NOTE: Minimum of 5 inches additional headroom required for assembly or removal of motor and fan wheel. Height shown (including motor) is maximum. For special requirements check with factory.

TORIT district sales representatives are conveniently located throughout the United States and Canada. One will gladly work with you on your in-plant air pollution problems, and offer complete recommendations at no obligation to you. Check your Yellow Pages, under "Dust Collecting Systems", for local listing, or write.



Donaldson Company Inc.  
Torit Division  
Box 1299  
Minneapolis, Minnesota 55440

Phone (612) 887-3921  
Telex 291038

LEADERS IN CONTROL OF IN-PLANT AIR POLLUTION