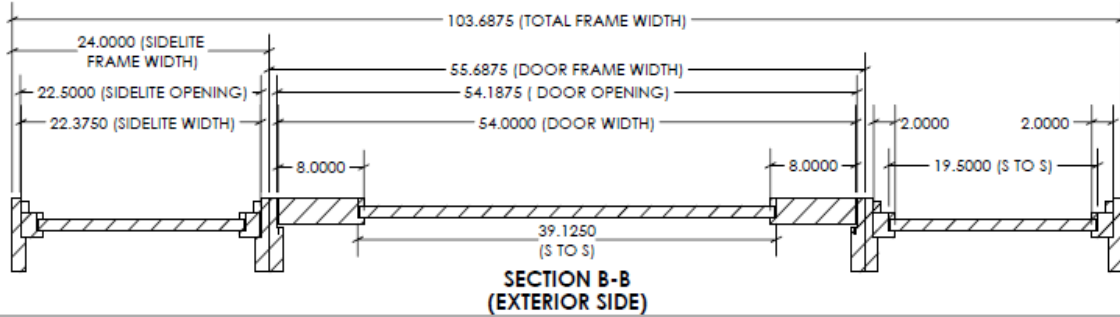
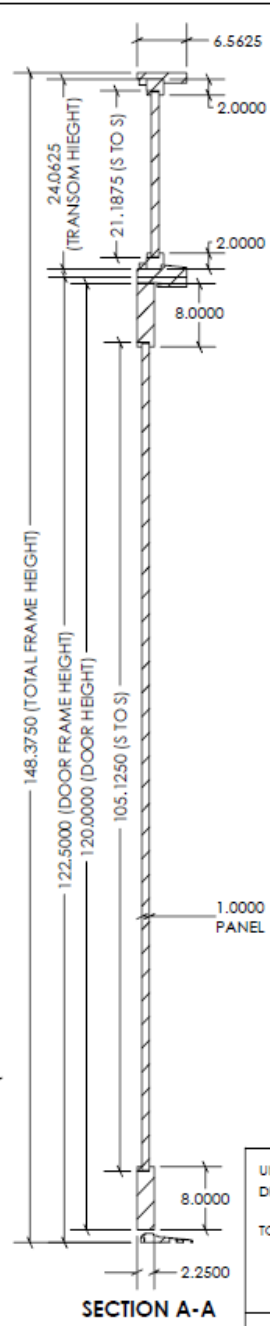
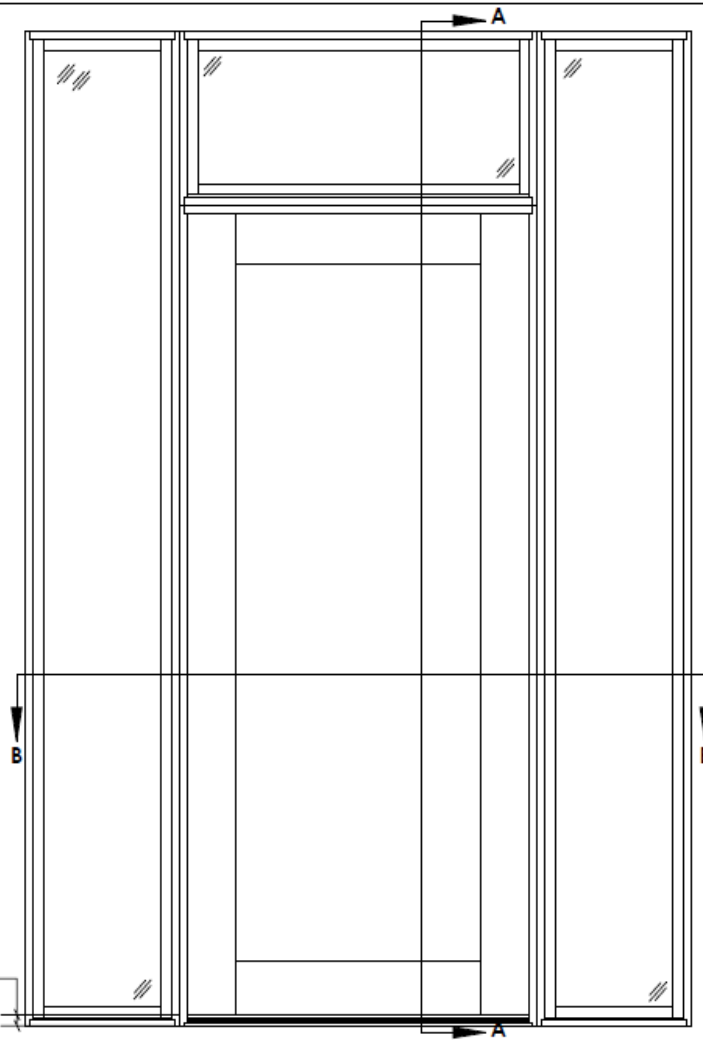
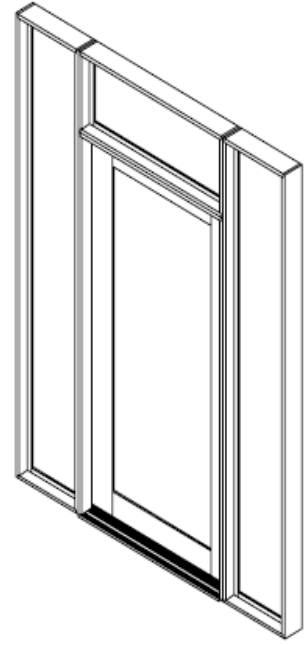


**NOTES**

1. MATERIAL: MAHOGANY
2. DOOR THICKNESS: 2.25"
3. FRAME THICKNESS: 1.25"
4. FRAME DEPTH: 6.5625"
5. STICKING: SQUARE
6. STOP: SQUARE (INTERIOR)
7. GLASS: 1" INSULATED GLASS
  1. TEMPERED
8. SWING: LH INSWING
9. WEATHERSTRIPPING: YES
  1. FRAME: Q-LON
10. MACHINING PROVIDED: YES
  1. HINGES: 5 (7)
  2. MULTIPOINT LOCKSET
11. HARDWARE PROVIDED: YES
  1. HINGES: 5"(7)
  2. MULTIPOINT LOCKSET
12. FINISH: RAW TO BE STAINED



REVISIONS			
REV.	DESCRIPTION	DATE	DRAWN BY
A	INITIAL RELEASE	5/6/2026	BLG



Approval Signature \_\_\_\_\_  
Date \_\_\_\_\_

The signature (or AAN Stamp) on this print indicates the approval of the design, dimensions, and quantities shown. Authorization for this product to manufactured is given.

**\*\*\*ALL PARTS SHOWN ARE ADAMS STANDARD PROFILES\*\*\***  
**\*\*\*TWO DIMENSION REVISIONS ARE INCLUDED\*\*\***  
**\*\*\*ANY CHANGES TO PROFILES/PARTS WILL INCUR ADDITIONAL CHARGES\*\*\***

UNLESS OTHERWISE SPECIFIED  
DIMENSIONS ARE IN INCHES

TOLERANCES:

**QTY.1**

SHEET 1 OF 3

	2225 Kerper Blvd. Dubuque, IA 52001 563-690-1358 p 563-557-8852 f	
	SIZE B	REV A

DWG # (Smith)Square Sticking Door, Inswing Full Lite, One Panel