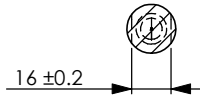


M10x1.25P  
 10.340  
 MD 10.000  
 9.348  
 PD 9.188  
 8.912  
 MINOR 8.647

M10x1.25P  
 10.340  
 MD 10.000  
 9.348  
 PD 9.188  
 8.912  
 MINOR 8.647



SECTION A-A

**NOTE:**  
 1) Break all sharp corners; no hanging burrs  
 2) Reference drawing# A10SKUA2 for all remaining ballnut dimensions

BACKLASH 0.07 MAX

| BREAK SHARP EDGES UNLESS OTHERWISE SPECIFIED |         |       |       |       |          |       |             |
|--|---------|-------|-------|-------|----------|-------|-------------|
| ROUGH M/C                                    | FIT M/C |       | GRD   |       | MATERIAL |       |             |
| 6.3 a  | 1.6 a   |       | 0.4 a |       | FINISH   |       |             |
| ▽  | ▽▽      |       | ▽▽▽   |       |          |       |             |
| TOLERANCE mm                                 |         |       |       |       |          |       |             |
| UP   | 6       | 30    | 120   | 300   | 600      | 1200  | 2400        |
| TO   | 6       | 30    | 120   | 300   | 600      | 1200  | 2400 OVER   |
|  | ± 0.1   | ± 0.2 | ± 0.3 | ± 0.4 | ± 0.5    | ± 0.8 | ± 1.0 ± 1.5 |

|           | DATE    | NAME |
|-----------|---------|------|
| DRAWN     | 1001/09 | B.B. |
| CHECKED   |         |      |
| ENG APPR. |         |      |
| MFG APPR. |         |      |
| Q.A.      |         |      |

**HIWIN** HIWIN CORPORATION  
 1400 Madeline Lane, Elgin, IL 60124

TITLE: MACHINING AND ASSEMBLY PRINT  
 4R20-20A2-DFSV-2930-0.05

CUSTOMER: P. GRAHAM DUNN

SIZE B DWG. NO. C-PGD-09-01 REV N/C SCALE 1:2 SHEET 1 of 2

