



# GET CONNECTED AT IWF 2016!

## Evolution 7405-Connect

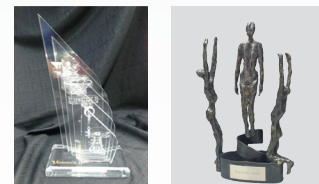
Inside:



### Specifications

Evolution 7404 4mat plus  
Clamex-Lamello P-System

- 21.5" monitor
- Campus V6 including macro for Lamello programming
- 16-spindle drilling unit 7883 (10v/6h)
- 9 HP router unit 7830
- 6-position tool changer 7874 X/Y aggregate holder
- Work piece measurement by laser
- 8 c/m vacuum pump
- Lamello P-System 4-axis tool kit
- Lamello P-System aggregate 7868



AWARD-WINNING  
INNOVATION

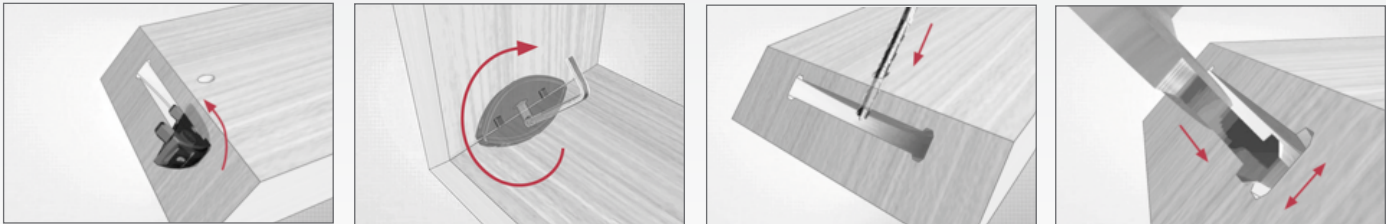


**HOLZHER**  
[www.holzherusa.com](http://www.holzherusa.com)



A proud member of the Weinig Group

# Evolution 7405-Connect



**FOR MORE INFORMATION**  
 contact your local Holz-Her dealer  
 or contact us directly at  
[sales@holzherusa.com](mailto:sales@holzherusa.com) (e)  
 704.587.3400 (t)

