

KILN INTERIOR TEMPERATURE AND HUMIDITY READINGS

Sensors located near center of pack

File Creat Date:18/07/06 09:11:49



GSP-6 Data Report

Device Information

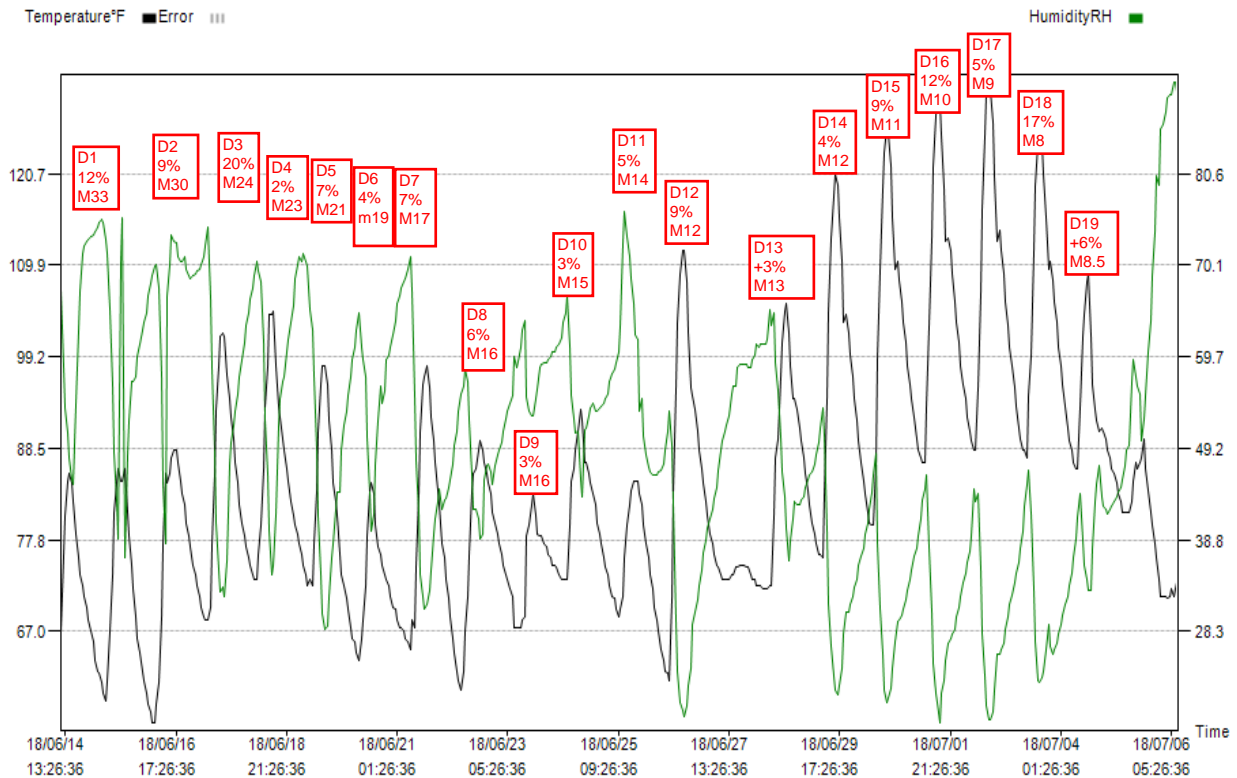
Log Interval: 1H 0M 0S	Start Delay: 0.0	Start Time: 18/06/14 11:26:36
Total Space: 16000	Stop Allow: Disable	Expected Stop Time: 20/04/11 02:26:36
Temperature Type:°F	Alarm Setting: Disable	Actual Stop Time: Not stopped
Voice Set:Disable	Record Mode: Max	GSP: Disable

Trip Information

Serial Number: chgsp
Userinfo: GSP-6 temperature & humidity Data Logger

Logging Summary

Upper Limit: 185.0°F	Upper Limit: 99.0%RH	Recorded Count: 526
Lower Limit: -20.0°F	Lower Limit: 10.0%RH	First time: 18/06/14 11:26:36
Highest: 131.4°F	Highest: 91.0%RH	Last time: 18/07/06 08:26:36
Lowest: 56.3°F	Lowest: 17.9%RH	
Average: 84.9°F	Average: 49.2%RH	



Time	°F	RH	Time	°F	RH	Time	°F	RH	Time	°F	RH	Time	°F	RH	Time	°F	RH
18/06/14	67.1	67.2	15:26:36	104.5	35.9	19:26:36	85.6	47.2	23:26:36	88.3	33.5	03:26:36	94.3	35.4	07:26:36	81	47.2
12:26:36	76.1	58.4	16:26:36	98.1	41.7	20:26:36	84.4	47.5	18/06/27	86	35.4	04:26:36	92.1	36.9	08:26:36	81	49
13:26:36	80.6	53.9	17:26:36	86.6	51.9	21:26:36	83.1	46.6	01:26:36	84.4	37.3	05:26:36	89.6	37.9	09:26:36	81	49.5
14:26:36	84.7	50.9	18:26:36	92.1	54.9	22:26:36	81	45.2	02:26:36	82.2	38.7	06:26:36	88.3	39.2	10:26:36	82.2	56.8
15:26:36	85.6	48.1	19:26:36	89.6	56.9	23:26:36	79.7	47.2	03:26:36	80.6	40.2	07:26:36	87.3	41.2	11:26:36	84.7	59.4
16:26:36	84.4	45.6	20:26:36	88.2	57.3	18/06/23	78.4	48.5	04:26:36	78.4	41.2	08:26:36	86.9	43.3	12:26:36	86.9	57.4
17:26:36	82.2	45.2	21:26:36	86	60.2	01:26:36	77.4	49	05:26:36	77.4	42.2	09:26:36	86.9	44.6	13:26:36	86	56.3
18:26:36	78.4	54.4	22:26:36	84.7	61.7	02:26:36	76.1	50	06:26:36	76.1	43.6	10:26:36	93.4	46.2	14:26:36	86.9	55.5
19:26:36	75.7	62.8	23:26:36	82.2	63.6	03:26:36	74.8	51.1	07:26:36	74.8	44.7	11:26:36	102.9	37.9	15:26:36	87.3	50.1
20:26:36	73.6	67.2	18/06/19	80.6	65.6	04:26:36	73.6	52.5	08:26:36	74.5	46.7	12:26:36	113.2	30.6	16:26:36	89.6	52.5
21:26:36	72.3	71.5	01:26:36	79.5	68.5	05:26:36	73.2	53.5	09:26:36	73.6	49	13:26:36	121.5	24.7	17:26:36	86	55.3
22:26:36	71.1	72.4	02:26:36	78.4	70.1	06:26:36	72	54.4	10:26:36	73.2	50.1	14:26:36	127.6	21.3	18:26:36	83.5	60.3
23:26:36	69.8	72.9	03:26:36	77.4	71.1	07:26:36	71.1	55.3	11:26:36	73.2	51.1	15:26:36	129.2	20.3	19:26:36	81	63.8
18/06/15	68.4	73	04:26:36	76.1	70.6	08:26:36	67.5	59.7	12:26:36	73.2	51.9	16:26:36	128.8	17.9	20:26:36	79.5	69
01:26:36	67.1	73.4	05:26:36	74.8	71.5	09:26:36	67.5	58.4	13:26:36	73.2	53	17:26:36	125.2	21.3	21:26:36	77.4	74
02:26:36	65.8	73.5	06:26:36	73.6	70.6	10:26:36	67.5	59.2	14:26:36	73.6	55.5	18:26:36	118.9	22.8	22:26:36	75.7	80.4
03:26:36	63.7	73.9	07:26:36	72.3	70	11:26:36	67.5	60.8	15:26:36	73.6	56.4	19:26:36	112.8	25.1	23:26:36	73.2	79.3
04:26:36	62.4	74.4	08:26:36	73.2	65.1	12:26:36	68.4	62.7	16:26:36	74.5	56.4	20:26:36	113.2	27	18/07/06	71.1	85.7
05:26:36	62.2	75	09:26:36	72.3	62.7	13:26:36	68.7	63.8	17:26:36	74.5	58.4	21:26:36	111.6	27.6	01:26:36	71.1	86.2
06:26:36	61	75.4	10:26:36	77.4	57.3	14:26:36	78.3	55	18:26:36	74.8	58.8	22:26:36	109	28	02:26:36	71.1	87.6
07:26:36	59.7	75	11:26:36	83.5	49	15:26:36	79.5	53.4	19:26:36	74.8	58.8	23:26:36	105.6	28.6	03:26:36	70.9	89.2
08:26:36	58.4	73	12:26:36	90.5	41.3	16:26:36	81.9	52.9	20:26:36	74.8	58.8	18/07/02	103.3	30	04:26:36	71.1	89.6
09:26:36	61.2	71.5	13:26:36	95.9	34.8	17:26:36	83.1	53	21:26:36	74.5	58.8	01:26:36	100.8	31.1	05:26:36	72	89.5
10:26:36	67.1	65.1	14:26:36	98.2	30.4	18:26:36	80.6	54.9	22:26:36	74.5	58.4	02:26:36	98.2	32.4	06:26:36	71.1	91
11:26:36	73.6	56.3	15:26:36	98.2	28.6	19:26:36	78.4	56	23:26:36	73.6	58.4	03:26:36	95.9	33.9	07:26:36	72	91
12:26:36	81	48.6	16:26:36	95.9	29	20:26:36	78.3	58.4	18/06/28	73.2	59.4	04:26:36	94.3	35	08:26:36	73.6	88.7
13:26:36	84.4	43.1	17:26:36	91.8	32.4	21:26:36	78.3	58.8	01:26:36	73.2	59.9	05:26:36	92.1	36.3			
14:26:36	86	38.9	18:26:36	88.2	36.8	22:26:36	77.4	58.9	02:26:36	72.3	61.2	06:26:36	90.5	37.4			
15:26:36	84.7	70.6	19:26:36	84.4	38.3	23:26:36	77	58.9	03:26:36	72.3	60.8	07:26:36	89.4	39.2			
16:26:36	84.7	75.5	20:26:36	82.2	42.3	18/06/24	76.1	59.4	04:26:36	72.3	61.2	08:26:36	88.3	43.6			
17:26:36	86	36.8	21:26:36	80.6	44.2	01:26:36	75.7	59.7	05:26:36	72	61.2	09:26:36	88.3	44.1			
18:26:36	81	48.5	22:26:36	76.1	44.2	02:26:36	74.8	60.2	06:26:36	72	61.2	10:26:36	95.5	44.1			
19:26:36	78.3	52.4	23:26:36	73.6	49	03:26:36	74.8	60.3	07:26:36	72	61.7	11:26:36	106.7	35.3			
20:26:36	74.8	56.8	18/06/20	72.3	51.9	04:26:36	74.5	60.8	08:26:36	72.3	65.1	12:26:36	116.6	28			
21:26:36	72	56.8	01:26:36	70.9	53.4	05:26:36	73.6	61.2	09:26:36	72.3	63.3	13:26:36	125.2	23.2			
22:26:36	68.7	57.4	02:26:36	69.6	55.3	06:26:36	73.2	61.8	10:26:36	80.6	64.7	14:26:36	130.1	19.8			
23:26:36	66.2	59.7	03:26:36	67.5	57.4	07:26:36	73.2	63.6	11:26:36	87.3	58.9	15:26:36	131.4	18.2			
18/06/16	64.6	61.2	04:26:36	66.2	59.4	08:26:36	73.2	64.6	12:26:36	89.6	55.8	16:26:36	130.5	18.2			
01:26:36	62.4	62.8	05:26:36	65.8	60.8	09:26:36	73.2	66.6	13:26:36	96.8	50.5	17:26:36	126.7	19.2			
02:26:36	61.2	63.6	06:26:36	64.6	62.8	10:26:36	79.5	60.8	14:26:36	100.8	46.6	18:26:36	120.2	21.7			
03:26:36	59.7	64.6	07:26:36	63.7	64.6	11:26:36	84.7	55.3	15:26:36	104.5	43.7	19:26:36	112.8	25.7			
04:26:36	58.5	66.6	08:26:36	66.2	60.8	12:26:36	86	52.5	16:26:36	105.4	40.2	20:26:36	114.1	25.7			
05:26:36	57.6	68	09:26:36	68.4	59.4	13:26:36	88.2	50.9	17:26:36	102	36.4	21:26:36	111.6	26.2			
06:26:36	56.3	69	10:26:36	72.3	57.3	14:26:36	90.5	51.1	18:26:36	98.2	38.7	22:26:36	109	27			
07:26:36	56.3	70	11:26:36	78.3	50.5	15:26:36	93	45.7	19:26:36	94.3	41.2	23:26:36	105.6	28.5			
08:26:36	58.5	70.1	12:26:36	83.5	44.1	16:26:36	91.8	43.7	20:26:36	94.3	43.1	18/07/03	102.9	30			
09:26:36	61	67.6	13:26:36	84.4	39.8	17:26:36	86.9	51.4	21:26:36	93	42.8	01:26:36	100.4	31.4			
10:26:36	68.7	57.3	14:26:36	83.1	41.8	18:26:36	86.9	51.6	22:26:36	90.9	42.8	02:26:36	98.1	32.5			
11:26:36	77.4	45.2	15:26:36	79.5	47.5	19:26:36	85.6	52.9	23:26:36	89.4	43.3	03:26:36	95.5	33.9			
12:26:36	85.6	38.4	16:26:36	77	52.4	20:26:36	84.4	53.9	18/06/29	87.3	43.7	04:26:36	93.4	35			
13:26:36	84.4	66.7	17:26:36	76.1	56.3	21:26:36	83.1	54.4	01:26:36	85.6	44.7	05:26:36	90.9	36.3			
14:26:36	85.6	70.1	18:26:36	74.8	54.4	22:26:36	81.9	53.5	02:26:36	83.5	45.6	06:26:36	89.6	37.9			
15:26:36	87.3	73.5	19:26:36	73.6	55.8	23:26:36	79.7	53.4	03:26:36	81.9	46.1	07:26:36	88.3	39.8			
16:26:36	88.2	72.9	20:26:36	73.2	59.4	18/06/25	78.4	53.9	04:26:36	79.7	46.6	08:26:36	88.3	42.6			
17:26:36	88.2	72.6	21:26:36	72.3	59.9	01:26:36	77.4	54	05:26:36	78.4	47.5	09:26:36	87.3	45.1			
18:26:36	86.9	71.1	22:26:36	71.1	60.7	02:26:36	75.7	54.4	06:26:36	77.4	48.5	10:26:36	94.6	46.7			
19:26:36	84.7	70.6	23:26:36	69.8	62.2	03:26:36	74.5	54.9	07:26:36	76.1	50	11:26:36	99.5	41.8			
20:26:36	83.1	70.6	18/06/21	69.6	63.8	04:26:36	73.6	55.9	08:26:36	76.1	51.6	12:26:36	111.6	33			
21:26:36	81.9	71	01:26:36	68.4	65.7	05:26:36	72.3	56.8	09:26:36	75.7	53.9	13:26:36	119.3	27.1			
22:26:36	79.7	69.6	02:26:36	67.5	66.6	06:26:36	71.1	57.8	10:26:36	83.1	50.6	14:26:36	124.2	22.8			
23:26:36	78.3	69	03:26:36	67.5	67.6	07:26:36	70.9	58.3	11:26:36	94.3	39.7	15:26:36	124.2	22.6			
18/06/17	77	68.6	04:26:36	67.1	68.2	08:26:36	69.6	58.9	12:26:36	104.5	31.4	16:26:36	124	23.1			
01:26:36	74.8	69	05:26:36	66.2	68.5	09:26:36	68.7	60.3	13:26:36	113.2	26.7	17:26:36	120.6	23.7			
02:26:36	73.6	69.1	06:26:36	65.8	69.6	10:26:36	69.6	63.2	14:26:36	118	23.2	18:26:36	115.5	26.2			
03:26:36	72.3	69.5	07:26:36	64.9	71.1	11:26:36	71.1	72.6	15:26:36	120.6	21.7	19:26:36	109.4	29.1			
04:26:36	71.1	69.6	08:26:36	68.4	67.2	12:26:36	75.7	76.3	16:26:36	119.3	21.2	20:26:36	110.3	26.7			
05:26:36	69.8	70.1	09:26:36	67.5	55	13:26:36	79.5	73.4	17:26:36	115.5	22.1	21:26:36	108.1	25.7			
06:26:36	68.7	71	10:26:36	74.8	47.7	14:26:36	81.9	71.1	18:26:36	110.3	24.1	22:26:36	105.6	26.2			

**OUTSIDE TEMPERATURE
AND HUMIDITY READINGS**



File Creat Date:18/07/06 09:21:42

GSP-6 Data Report

Device Information

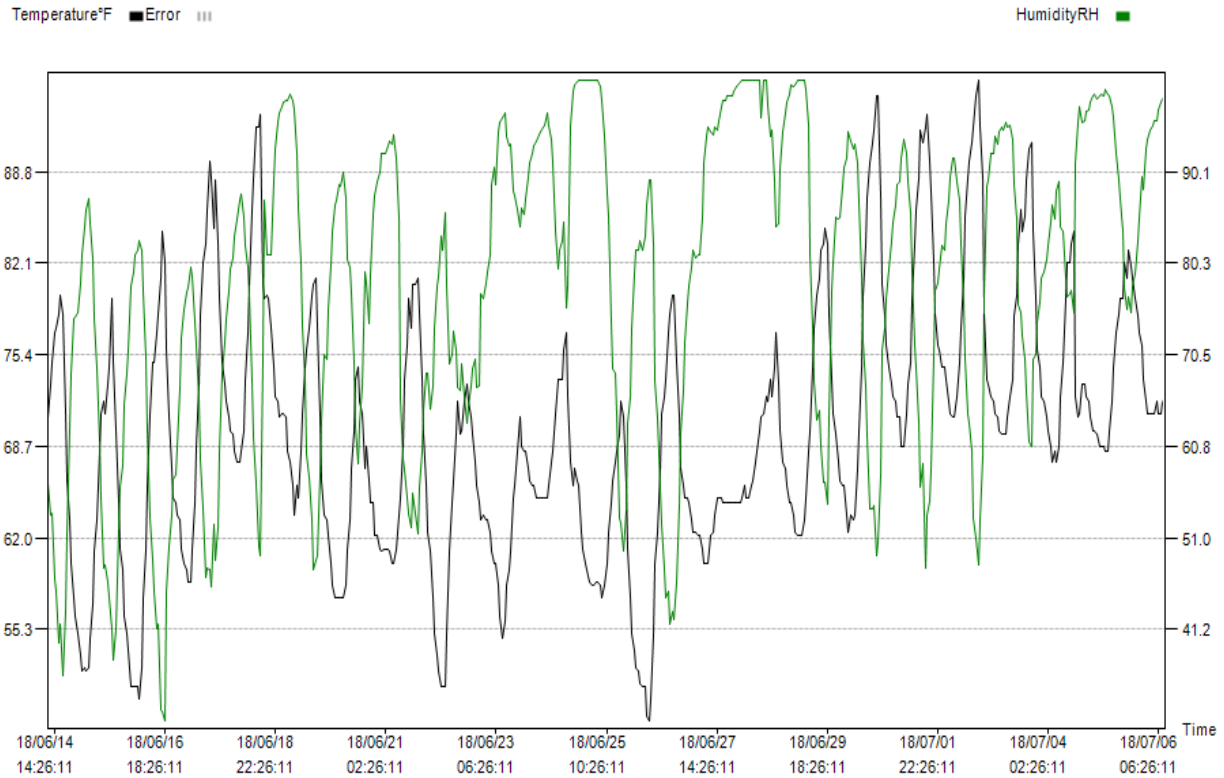
Log Interval: 1H 0M 0S	Start Delay: 0.0	Start Time: 18/06/14 11:26:11
Total Space: 16000	Stop Allow: Disable	Expected Stop Time: 20/04/11 02:26:11
Temperature Type:°F	Alarm Setting: Disable	Actual Stop Time: Not stopped
Voice Set:Disable	Record Mode: Max	GSP: Disable

Trip Information

Serial Number: yyyyyyyyyy
Userinfo: GSP-6 temperature & humidity Data Logger

Logging Summary

Upper Limit: 185.0°F	Upper Limit: 100.0%RH	Recorded Count: 527
Lower Limit: -20.0°F	Lower Limit: 10.0%RH	First time: 18/06/14 11:26:11
Highest: 95.5°F	Highest: 99.9%RH	Last time: 18/07/06 09:26:11
Lowest: 48.6°F	Lowest: 31.4%RH	
Average: 69.8°F	Average: 77.8%RH	



Time	°F	RH	Time	°F	RH	Time	°F	RH	Time	°F	RH	Time	°F	RH	Time	°F	RH
18/06/14	70.9	56.8	15:26:11	93	49	19:26:11	69.6	69.1	23:26:11	64.9	71.9	03:26:11	70.9	88.7	07:26:11	69.8	98.3
12:26:11	73.2	53.4	16:26:11	80.6	70.5	20:26:11	67.5	70	18/06/27	64.9	76	04:26:11	70.9	89	08:26:11	72	97
13:26:11	74.8	53.5	17:26:11	79.5	87.1	21:26:11	65.8	67.1	01:26:11	64.6	77.9	05:26:11	68.7	91.6	09:26:11	74.5	95.9
14:26:11	77	46.6	18:26:11	79.7	81.3	22:26:11	64.6	67.2	02:26:11	63.3	79.9	06:26:11	68.7	93.6	10:26:11	77	92
15:26:11	77.4	45.2	19:26:11	79.5	81.2	23:26:11	63.3	77	03:26:11	62.4	81.7	07:26:11	71.1	92.1	11:26:11	78.4	89.2
16:26:11	78.4	39.7	20:26:11	77.4	81.2	18/06/23	63.7	76.5	04:26:11	62.4	80.9	08:26:11	73.2	89	12:26:11	79.5	87.2
17:26:11	79.7	41.8	21:26:11	74.5	89.2	01:26:11	63.3	78.3	05:26:11	62.2	81.3	09:26:11	74.8	85.7	13:26:11	79.5	83.8
18:26:11	78.4	36.3	22:26:11	72.3	92.6	02:26:11	63.3	79.4	06:26:11	62.2	81.3	10:26:11	79.5	79.4	14:26:11	82.2	77.8
19:26:11	71.1	43.3	23:26:11	72	95.4	03:26:11	62.4	81.2	07:26:11	61.2	85.3	11:26:11	83.5	71.6	15:26:11	81	75.4
20:26:11	66.2	51.6	18/06/19	70.9	96.4	04:26:11	61	88.7	08:26:11	60.1	91	12:26:11	86	69.1	16:26:11	83.1	76.8
21:26:11	66.3	62.7	01:26:11	71.1	97	05:26:11	60.1	90.3	09:26:11	60.1	93.9	13:26:11	88.3	63.3	17:26:11	81.9	75
22:26:11	60.1	68.5	02:26:11	71.1	97.5	06:26:11	60.1	88.7	10:26:11	60.1	94.9	14:26:11	91.8	56.4	18:26:11	81	77.9
23:26:11	57.6	74.4	03:26:11	70.9	97.8	07:26:11	58.5	94.4	11:26:11	62.2	94.4	15:26:11	90.9	58.9	19:26:11	79.5	79.3
18/06/15	56.3	74.5	04:26:11	68.4	97.8	08:26:11	56.3	95.4	12:26:11	62.4	94	16:26:11	92.1	47.7	20:26:11	78.3	82.8
01:26:11	55	75	05:26:11	67.5	98.4	09:26:11	54.7	95.9	13:26:11	63.7	94.9	17:26:11	93	53.4	21:26:11	77	85.3
02:26:11	53.4	78.3	06:26:11	65.8	97.8	10:26:11	55.9	96.4	14:26:11	64.9	94.5	18:26:11	89.6	54.9	22:26:11	76.1	89.6
03:26:11	52.3	81.2	07:26:11	63.7	96.8	11:26:11	58.5	93.9	15:26:11	64.9	95.5	19:26:11	87.3	58.9	23:26:11	73.6	88.2
04:26:11	52.5	84.3	08:26:11	65.8	92.1	12:26:11	59.7	92.9	16:26:11	64.9	97	20:26:11	82.2	70.6	18/07/06	72	92.5
05:26:11	52.3	86.1	09:26:11	64.9	86.2	13:26:11	61	93.1	17:26:11	64.6	97.8	21:26:11	78.4	77.4	01:26:11	71.1	93.6
06:26:11	52.5	87.2	10:26:11	68.4	80.2	14:26:11	64.9	88.1	18:26:11	64.6	97.8	22:26:11	76.1	78.3	02:26:11	71.1	94.5
07:26:11	54.7	84.6	11:26:11	71.1	73.5	15:26:11	65.8	87.6	19:26:11	64.6	98.3	23:26:11	75.7	79.8	03:26:11	71.1	95
08:26:11	57.2	80.7	12:26:11	74.5	67.7	16:26:11	68.4	86.1	20:26:11	64.6	98.3	18/07/02	74.5	82.3	04:26:11	71.1	95.5
09:26:11	61	74.4	13:26:11	75.7	59.9	17:26:11	70.9	84.3	21:26:11	64.6	98.3	01:26:11	74.5	81.8	05:26:11	72	95.5
10:26:11	63.3	69.1	14:26:11	77.4	57.4	18:26:11	68.7	86.2	22:26:11	64.6	98.8	02:26:11	73.6	84.6	06:26:11	71.1	96.8
11:26:11	68.4	61.2	15:26:11	79.7	52.9	19:26:11	68.4	85.6	23:26:11	64.6	99.3	03:26:11	72	87.1	07:26:11	71.1	97.5
12:26:11	71.1	55	16:26:11	80.6	47.5	20:26:11	68.4	87.2	18/06/28	64.6	99.4	04:26:11	71.1	89.5	08:26:11	72	97.9
13:26:11	72	47.7	17:26:11	81	48.6	21:26:11	67.1	89.5	01:26:11	64.6	99.8	05:26:11	70.9	91.6	09:26:11	NC	NC
14:26:11	71.1	48	18:26:11	77.4	49.1	22:26:11	66.2	91	02:26:11	64.9	99.9	06:26:11	70.9	91.6			
15:26:11	73.2	46.2	19:26:11	70.9	57.9	23:26:11	65.8	92.1	03:26:11	65.8	99.9	07:26:11	72.3	89			
16:26:11	74.5	44.6	20:26:11	66.2	63.6	18/06/24	65.8	92.9	04:26:11	64.9	99.9	08:26:11	74.8	87.1			
17:26:11	79.5	41.2	21:26:11	63.7	70.6	01:26:11	64.9	93.4	05:26:11	64.9	99.9	09:26:11	77.4	82.2			
18:26:11	74.8	37.9	22:26:11	63.3	70.1	02:26:11	64.9	94	06:26:11	65.8	99.9	10:26:11	81	76			
19:26:11	69.8	41.2	23:26:11	62.2	75.4	03:26:11	64.9	94.4	07:26:11	66.2	99.9	11:26:11	85.6	70.1			
20:26:11	64.6	51.9	18/06/20	60.1	80.2	04:26:11	64.9	94.9	08:26:11	67.5	99.9	12:26:11	88.3	64.3			
21:26:11	61.2	56.4	01:26:11	58.5	83.8	05:26:11	64.9	95	09:26:11	68.4	99.9	13:26:11	89.6	63.2			
22:26:11	59.7	58.8	02:26:11	57.6	86.6	06:26:11	64.9	96.4	10:26:11	69.8	99.9	14:26:11	90.9	60.9			
23:26:11	56.3	65.2	03:26:11	57.6	87.1	07:26:11	65.8	95	11:26:11	70.9	95.9	15:26:11	92.1	53			
18/06/16	55	68.6	04:26:11	57.6	88.7	08:26:11	67.5	93.6	12:26:11	71.1	99.9	16:26:11	94.3	50.9			
01:26:11	53.8	71.1	05:26:11	57.6	88.5	09:26:11	68.4	91.1	13:26:11	72.3	99.9	17:26:11	95.5	48.1			
02:26:11	51.1	77.9	06:26:11	57.6	90	10:26:11	71.1	83.8	14:26:11	72	97.3	18:26:11	92.1	52.9			
03:26:11	51.1	79.4	07:26:11	58.5	87.2	11:26:11	73.6	79.8	15:26:11	73.6	93.9	19:26:11	88.3	59.7			
04:26:11	51.1	81.3	08:26:11	61.2	80.7	12:26:11	73.6	81.7	16:26:11	72.3	94.5	20:26:11	78.4	77			
05:26:11	51.1	81.8	09:26:11	63.3	79.9	13:26:11	73.6	82.8	17:26:11	74.5	89	21:26:11	73.6	88.5			
06:26:11	50.2	82.8	10:26:11	67.1	77	14:26:11	75.7	84.8	18:26:11	77	84.2	22:26:11	73.2	89.2			
07:26:11	52.5	81.7	11:26:11	69.8	69.6	15:26:11	77	75.5	19:26:11	73.2	84.6	23:26:11	72.3	92			
08:26:11	57.6	77.3	12:26:11	73.6	62.8	16:26:11	72.3	77.9	20:26:11	69.8	90.6	18/07/03	72	92			
09:26:11	61.2	70.1	13:26:11	74.5	58.9	17:26:11	67.5	95	21:26:11	67.5	94.4	01:26:11	71.1	93.9			
10:26:11	65.8	62.2	14:26:11	72	63.3	18:26:11	65.8	98.8	22:26:11	67.1	96.4	02:26:11	70.9	93.1			
11:26:11	71.1	53	15:26:11	71.1	67.2	19:26:11	67.1	99.4	23:26:11	65.8	97.5	03:26:11	69.8	94.9			
12:26:11	74.8	48.6	16:26:11	67.1	79.4	20:26:11	66.2	99.8	18/06/29	64.6	98.4	04:26:11	69.6	94.9			
13:26:11	74.8	45.2	17:26:11	68.7	78.3	21:26:11	65.8	99.9	01:26:11	64.6	99.4	05:26:11	69.6	94.5			
14:26:11	77	41.3	18:26:11	66.2	73.9	22:26:11	62.4	99.9	02:26:11	63.7	99.3	06:26:11	69.6	95.4			
15:26:11	78.4	41.8	19:26:11	64.6	79.3	23:26:11	61.2	99.9	03:26:11	62.4	99.4	07:26:11	70.9	94.9			
16:26:11	81	32.5	20:26:11	64.6	85.6	18/06/25	60.1	99.9	04:26:11	62.2	99.9	08:26:11	72.3	95			
17:26:11	84.4	32.4	21:26:11	62.2	87.6	01:26:11	59.7	99.9	05:26:11	62.2	99.9	09:26:11	73.6	93.6			
18:26:11	82.2	31.4	22:26:11	62.2	89	02:26:11	58.8	99.9	06:26:11	62.2	99.9	10:26:11	78.3	88.7			
19:26:11	75.7	45.2	23:26:11	61.2	90	03:26:11	58.5	99.9	07:26:11	63.3	99.9	11:26:11	79.7	85.1			
20:26:11	70.9	50.1	18/06/21	61	92.1	04:26:11	58.5	99.9	08:26:11	64.9	98.9	12:26:11	83.5	75.9			
21:26:11	67.1	53.4	01:26:11	61.2	92	05:26:11	58.8	99.9	09:26:11	68.4	95	13:26:11	86	75			
22:26:11	64.9	57.3	02:26:11	61.2	92	06:26:11	58.8	99.9	10:26:11	69.8	81.2	14:26:11	84.4	72.6			
23:26:11	64.6	57.8	03:26:11	61.2	92.9	07:26:11	58.5	99.3	11:26:11	74.5	73.4	15:26:11	85.6	70.1			
18/06/17	63.7	60.8	04:26:11	61	93.4	08:26:11	57.6	97.8	12:26:11	77.4	67.7	16:26:11	88.2	66.6			
01:26:11	63.3	67.1	05:26:11	60.1	93.1	09:26:11	58.5	93.9	13:26:11	79.7	63.6	17:26:11	90.5	61.2			
02:26:11	61.2	72.4	06:26:11	60.1	94	10:26:11	60.1	87.7	14:26:11	81	64.6	18:26:11	90.9	60.8			
03:26:11	60.1	75.4	07:26:11	61.2	91.6	11:26:11	62.4	85.3	15:26:11	83.1	60.7	19:26:11	84.4	70.1			
04:26:11	59.7	77.3	08:26:11	63.7	85.1	12:26:11	64.6	73.9	16:26:11	83.5	56.9	20:26:11	79.5	70.5			
05:26:11	58.8	77.8	09:26:11	64.9	65.7	13:26:11	66.2	69.1	17:26:11	84.7	56.9	21:26:11	75.7	74			
06:26:11	58.8	79.9	10:26:11	68.7	59.4	14:26:11	67.5	68.6	18:26:11	83.5	54.5	22:26:11	74.5	76.3			
07:26:11	61.2	78															