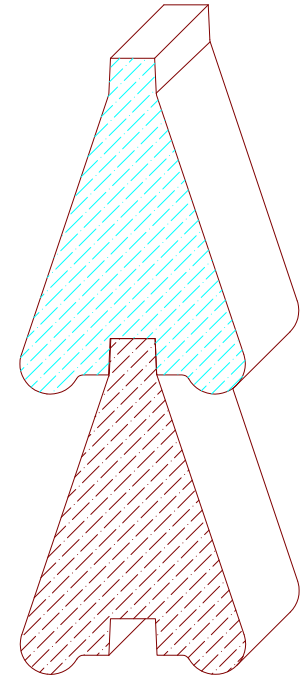
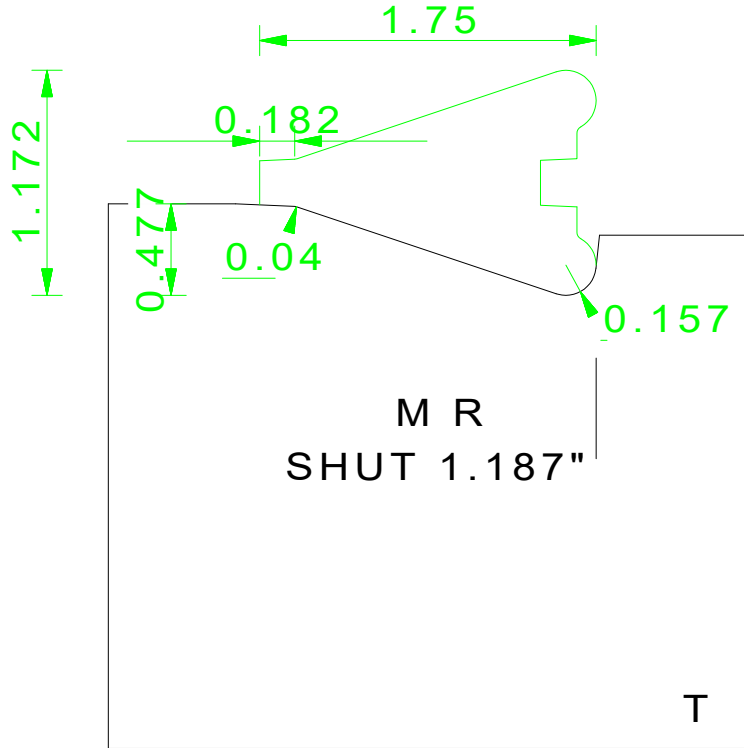


Custom Pressure Shoe Recommended



1-3/16" X 1-3/4"
SHUT 1.187"

Carbide size = 60mm long (2.375") x 50mm wide (2.000")

Cut steel size @ 2.500"L X 2.000"W

PLEASE SIGN OR MAKE CORRECT CHANGES.



KNIFE GRIND NEEDED ? Yes No Please Circle One Choice

Customer M R	Scale FULL	Part # SHUT 1.187"	Date 01-20-2012	Priority FedEX Standard Overnight	2 Day	UPS Red Blue Ground
------------------------	----------------------	------------------------------	---------------------------	---	--------------	--------------------------------