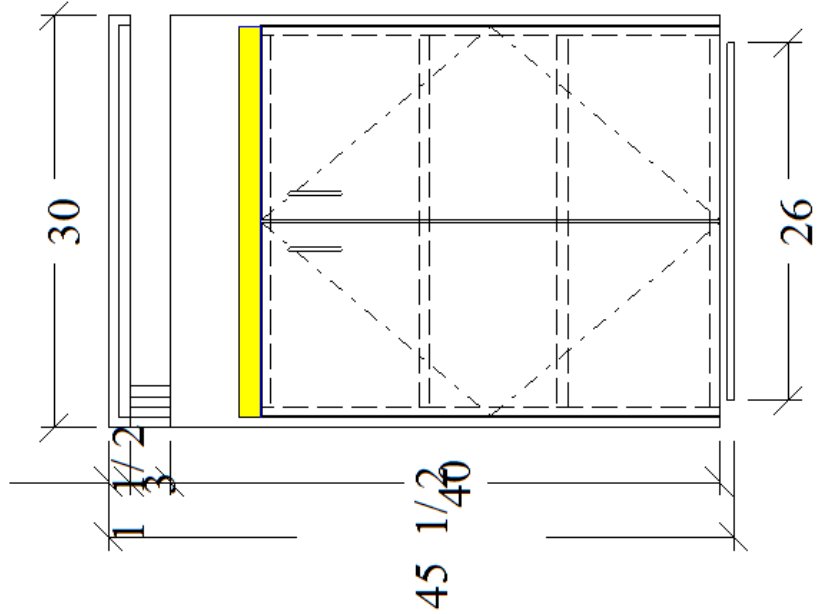


RUN_ID	Cost_Category	Description	Detail	Qty	Unit	Unit_Cost	Total_Cost
3050	Optimized Material	3/4" PLYWOOD - GRAINED PLY -	48 x 96		1 sheet	50.8	50.8
3050	Optimized Material	1" MDF - -	49 x 97		1 sheet	35.48	35.48
3050	Optimized Material	3/4" MELAMINE2S - WHITE - WHITE	49 x 97		1 sheet	27.2	27.2
3050	Optimized Material	1/4" MELAMINE 1S - WHITE -	49 x 97		1 sheet	25.6	25.6
3050	Optimized Material	3/4" PARTICLE BOARD - -	49 x 97		1 sheet	22.4	22.4
3050	Optimized Material	3/4" HARDWOOD VENEER PANEL - WD -	48 x 96		1 sheet	189.76	189.76
3050	Optimized Material	3/4" HARDWOOD VENEER PANEL - WD - WD	48 x 96		2 sheet	189.76	379.51
3050	Optimized Material	SHEET VENEER - WD -	48 x 96		1 sheet	186.04	186.04
3050	Unoptimized Material	BUY OUT STONE TOP - Quartz -		2.81	SF	384.34	1080.96
3050	Hardware	Pull Metal 96mm Dull Chrome			2 each	1.15	2.3
3050	Hardware	Salice Self Closing 120°			4 each	0.82	3.28
3050	Hardware	Base Plate 3mm w/Euro Screws			4 each	0.52	2.08
3050	Hardware	Shelf Support, Metal-5mm			8 each	0.05	0.4
3050	Edge	PL-02	0.875	2.63	lf	0.18	69.12
3050	Edge	WD TAPE	0.875	27.9	lf	0.18	108
3050	Edge	BLACK PVC	1.125	8.16	lf	0.08	48
3050	Edge	WHITE PVC	0.875	4.81	lf	0.06	36
3050	Labor	118 Clean Edging/File Edg		4	0.44 hrs	72	32
3050	Labor	124 Presort Parts 4 Assmb		4	0.23 hrs	72	16.8
3050	Labor	13 200-Cut Panel To Size	74.056315	2.84	hrs	72	204.4
3050	Labor	14 204-Lminte Tops/Lg Pr		1	1.02 hrs	72	73.2
3050	Labor	15 250-Wd/Pl.Edgbander L	30.3125	2.25	hrs	72	162
3050	Labor	15 250-Wd/Pl.Edgbander X	4.708333	0.92	hrs	72	66
3050	Labor	16 252-Egbnd/Pl Hndstk		1	0.32 hrs	72	22.68
3050	Labor	18 Bore-System(Face)		2	0.15 hrs	72	11.1
3050	Labor	19 Bore-Construction-Face		2	0.17 hrs	72	12
3050	Labor	20 Bore-Construction-Edge		4	0.76 hrs	72	54.8
3050	Labor	22 Bore For Hinge		4	0.42 hrs	72	30
3050	Labor	23 Mount Base Plate		8	0.09 hrs	72	6.2
3050	Labor	24 Drill For Pull		2	0.1 hrs	72	7.5
3050	Labor	26 Adjust Fronts/Shop		1	0.67 hrs	72	48
3050	Labor	27 Clamp Cabinet		1	0.67 hrs	72	48
3050	Labor	28 Assemble Cabint/Manual		1	1.5 hrs	72	108
3050	Labor	29 Inspect Cabinet/Clean		4	1.42 hrs	72	102.4
3050	Labor	34 Hang Door		2	0.3 hrs	72	21.6
3050	Labor	35 404-/Groove For Back/		2	0.07 hrs	72	4.8
3050	Labor	39 Laminate Small Parts		1	0.67 hrs	72	48
3050	Labor	59 Rip At Angle		9	1.19 hrs	72	85.6
3050	Labor	75 Assemble Countertops		1	2.25 hrs	72	162
3050	Labor	86 Delivery		9	0.29 hrs	72	21
3050	Labor	90 Finishing WD PARTS	13.095052	7.25	hrs	72	522
3050	Labor	98 Shop Supervision		4	0.92 hrs	72	66
3050	Labor	Cnc Program;		8	0.12 hrs	72	8.42
3050	Labor	101 Install Base Cab Mod 091309		1	2 hrs	105	210
3050	Labor	102 Install Stone Tops		1	2 hrs	105	210
3050	Labor	102 Install Sub Tops		1	0.33 hrs	105	35
3050	Labor	102 Install Tops Rev 091309	2.375	0.59	hrs	105	62.34
3050	Labor	100 Level /Install Tk		1	1.75 hrs	0	0
3050	Labor	132 1 3/16" Panel Lay-Up	4.66059	0.59	hrs	0	0
3050	Labor	133 Shop Drawing Casework		4	2 hrs	0	0
3050	Labor	36 Mount Pull		2	0.08 hrs	0	0
3050	Labor	46 Panel Lay-Up	13.095052	0.83	hrs	0	0
3050	Labor	82 Wide Belt Sand	6.547526	1.33	hrs	0	0



- Plan
- Sect
- Dimension
- Label
- Highlight
- Bounds
- Run-Based
- Monitor Always

Monitor Process Line Item Product Analysis

m with line_item.elevation_id = 42161

UDD2	Office Notes	Line Item ID#	Product ID, Description, Class	Qty	Utility...
		241583	0257; File Pad, [0056; File Pads, 0.000000, 500000, 0.000000].		
		241584	0873; Column, U Shaped, [0173; Column, 0.000000, 0.000000, 0.000000], [3090; Column Multi, [0010; Product Variation,],]		
		241585	0017; Base DBLE DR, 2-Shelf, [0004; Base Door, 0.000000, 30.500000, 24.875000], [0906; Product with Door Base Only Variation, [0010; Product Variation,],]		
		241586	0082; CTop Left UnFin, Right UnFin, 1.5, [0012; Countertop w/out Splash, 0.000000, 1.500000, 24.000000], [2831; CTOP NO SPLASH, [0010; Product Variation,],]		
	budget 4 standoffs...	241587	0499; Custom Product Budget Labor & Material, [0107; Budget Item, 24.000000, 24.000000, 24.000000], [2142; Budget Variation, [0010; Product Variation,],]		
		241588	0345; Sub Top, 1.5, [0055; Sub Tops, 0.000000, 750000, 3101; Sub Top Variation, [0010; Product Variation,],]		
		241589	0662; Buy Out Stone Top, [0174; Buy Out Stone Top, 0.000000, 0.000000, 25.000000].		

